

California two-spot octopus (*Octopus bimaculoides*)

\$10/embryo - 1 to 3 month development time
\$50/hatchling - 0 to 1 week old, 1.5 cm arm span
\$100/juvenile - 1 to 8 weeks old, 2-4 cm arm span
\$400/sub-adult/adult - 2 to 24 months old, 10-20 cm ML



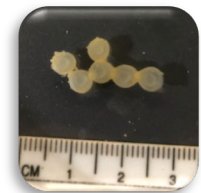
Pygmy Zebra Octopus (*Octopus chierchiae*)

\$100/embryo - 1 to 1.5 months development time
\$200/hatchling - 1 day to 2 months, 1.5 cm arm span
\$500/sub-adult/adult - 2 to 18 months, 2-4 cm ML



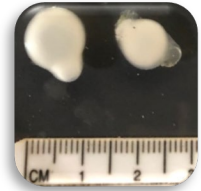
Hummingbird bobtail squid (*Euprymna berryi*)

\$3/embryo - 1 to 18 days development time
\$75/hatchling - 1 day to 1 months, 2mm-1 cm ML
\$150/juvenile - 1-2 months, 1-3 cm ML
\$250/ sub-adult & adult - 2 to 6 months, 3-6 cm ML



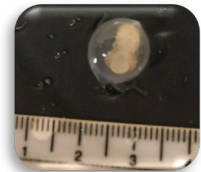
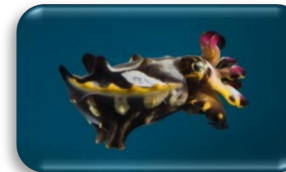
Australian striped pyjama squid (*Sepioloidea lineolata*)

\$10/embryo - 1 to 20 days development time
\$75/hatchling - 1 day to 1 month, 2mm-1 cm ML
\$150/juvenile - 1-2 months, 1-3 cm ML
\$250/sub-adult & adult - 2 to 14 months, 3-6 cm ML



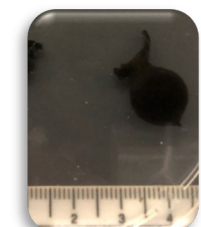
Flamboyant cuttlefish (*Metasepia pfefferi*)

\$50/ embryo - 1 to 21 days development time
\$150/hatchling - 0-3 weeks old, 6mm-1cm ML
\$350/sub-adult & adult - 3 weeks to 6 months, 1-7cm ML



Stumpy/Dwarf cuttlefish (*Sepia bandensis*)

\$10/embryo - 1 to 24 days development time
\$75/hatchling - 1 day to 1 months, 1 cm ML
\$150/juvenile - 1 to 2 months, 1-2 cm ML
\$250/sub-adult & adult - 2 to 6 months, 7 cm ML



Additional Information:

[Cephalopods at MBL](#)
[Cephalopod Culture](#)

Forms:

[Materials Transfer Agreement](#)
[MBL Account Request Form](#)

If interested in purchasing, please contact Manager of Cephalopod Operations at bgrasse@mbl.edu