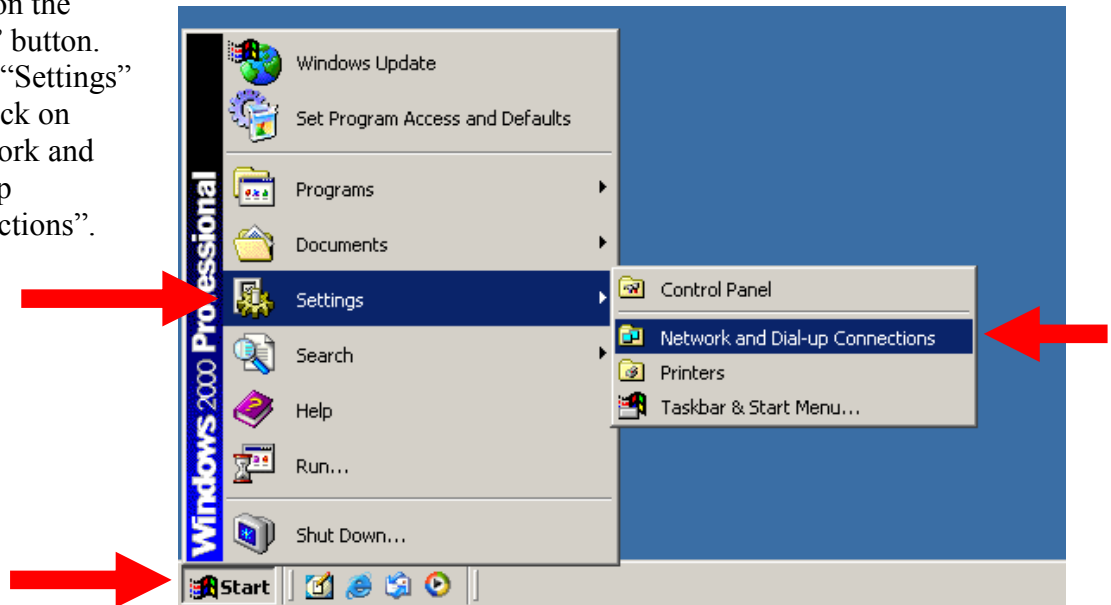


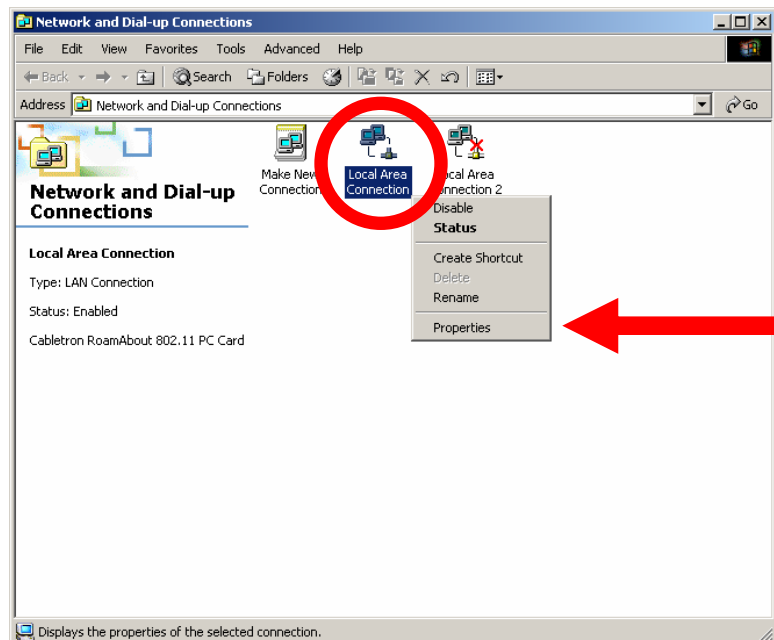
## Configuring a Windows 2000 computer for DHCP

In order to complete the following changes you must have Administrator rights on the computer that you are using.

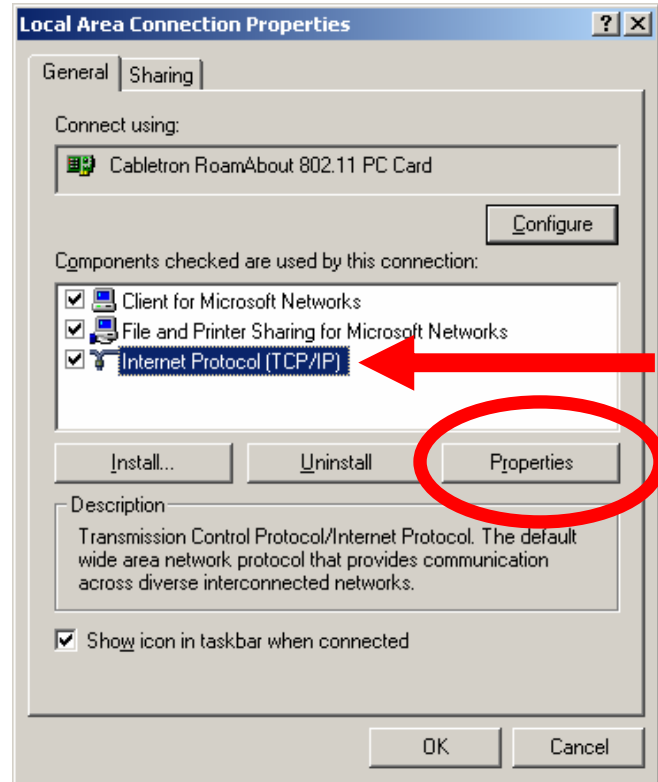
1. Click on the “Start” button. Select “Settings” and click on “Network and Dial-up Connections”.



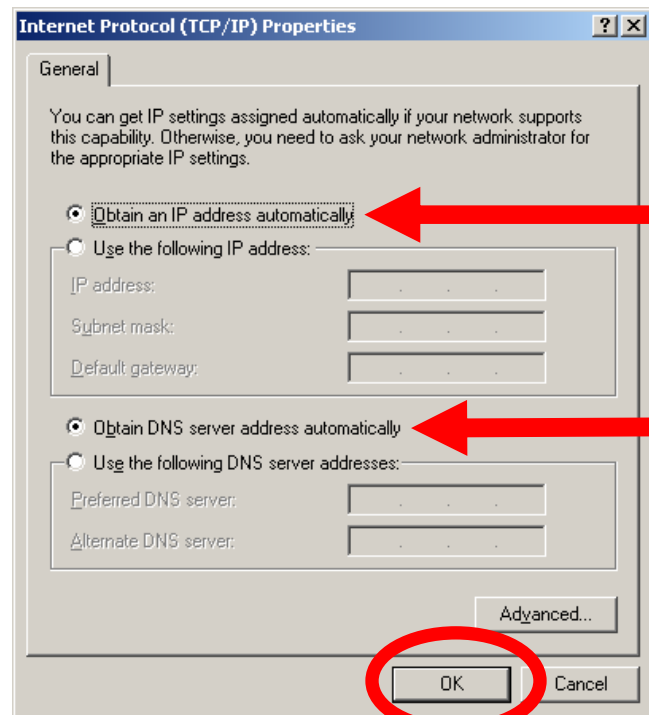
2. Right click on “Local Area Connection” and select “Properties”.



3. Select “Internet Protocol (TCP/IP)” and click on “Properties”.



4. On the “Internet Protocol (TCP/IP) Properties” window select the options “Obtain an IP address automatically” and “Obtain DNS server address automatically” and click “OK”.



5. Click “OK” on the “Local Area Connection Properties” window to confirm the changes. And you are now configured for DHCP.

---

If you experience any problems please contact the MBL IT HelpDesk by phone at extension 7654 or by email at [helpdesk@mbi.edu](mailto:helpdesk@mbi.edu). You may also submit a HelpDesk ticket by going to the web site <http://helpdesk.mbi.edu/> and filling in the required information. A member of the IT Department will contact you regarding your request. The MBL IT office hours are Monday through Friday 8:00 a.m. to 5:00 p.m.

Thank You,  
MBL Information Technology Department