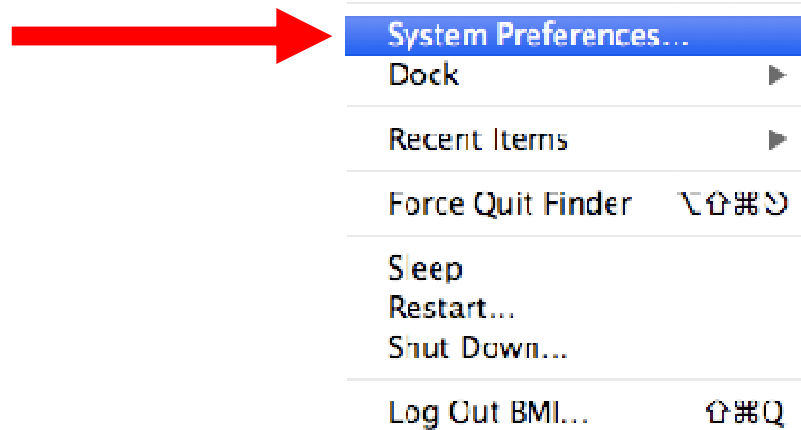


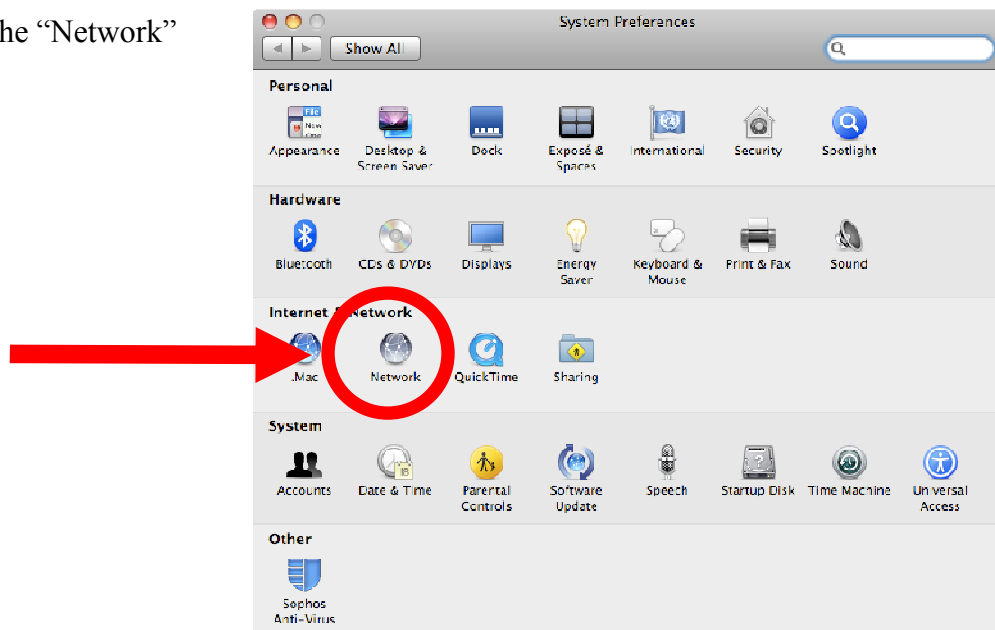
## Configuring an Macintosh Tiger (OS 10.4) computer for DHCP

In order to complete the following changes you must have Administrator rights on the computer that you are using.

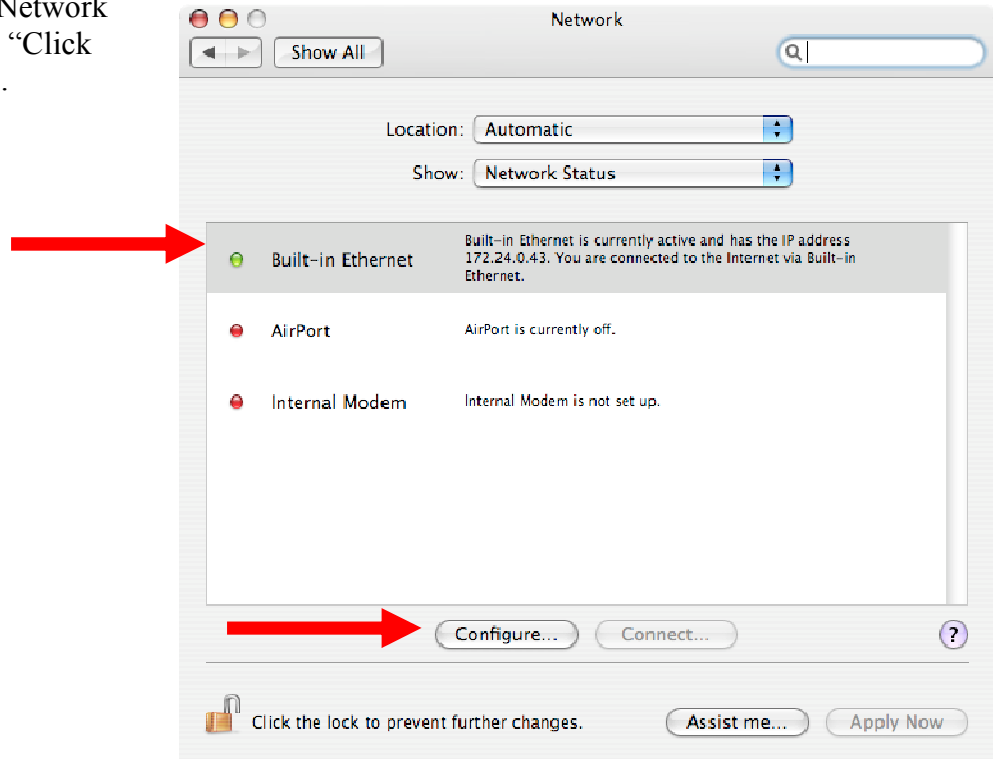
1. Click on the Apple Icon and select “System Preferences”.



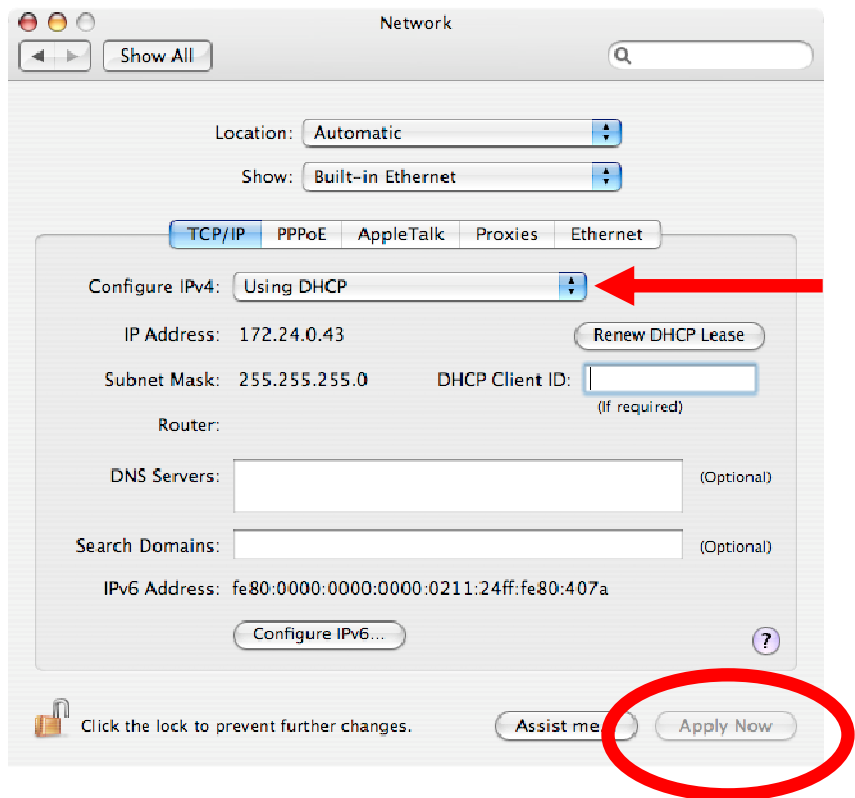
2. Click on the “Network” icon.



3. Select your Network Adapter and “Click “Configure””.



4. Next to “Configure IPv4” select “Using DHCP” and click “Apply Now”.



5. Your computer is now configured for DHCP.

---

If you experience any problems contact the MBL IT HelpDesk by phone at extension 7654 or by email at [helpdesk@mbledu](mailto:helpdesk@mbledu). You may also submit a HelpDesk ticket by going to the web site <http://helpdesk.mbledu/> and filling in the required information. A member of the IT Department will contact you regarding your request. The MBL IT office hours are Monday through Friday 8:00 a.m. to 5:00 p.m.

Thank You,  
MBL Information Technology Department